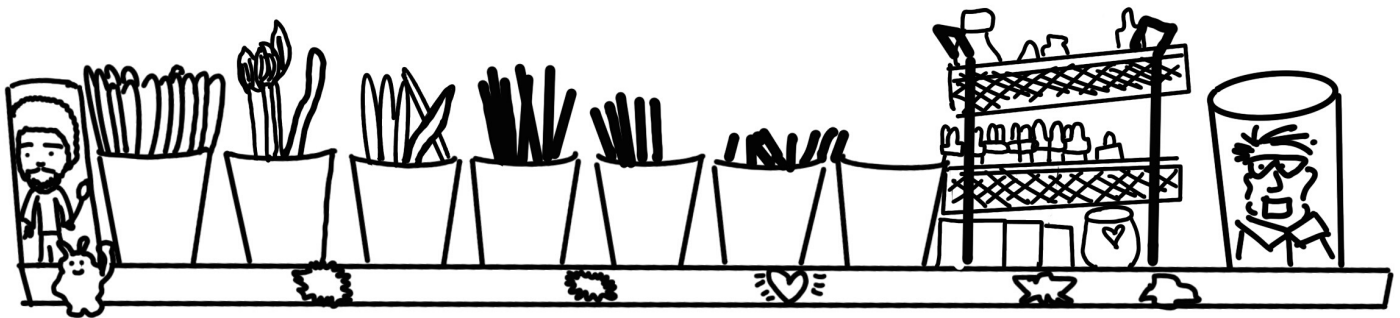
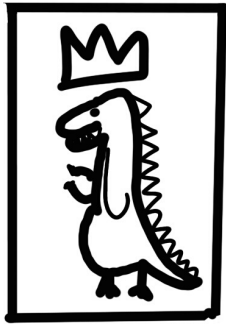




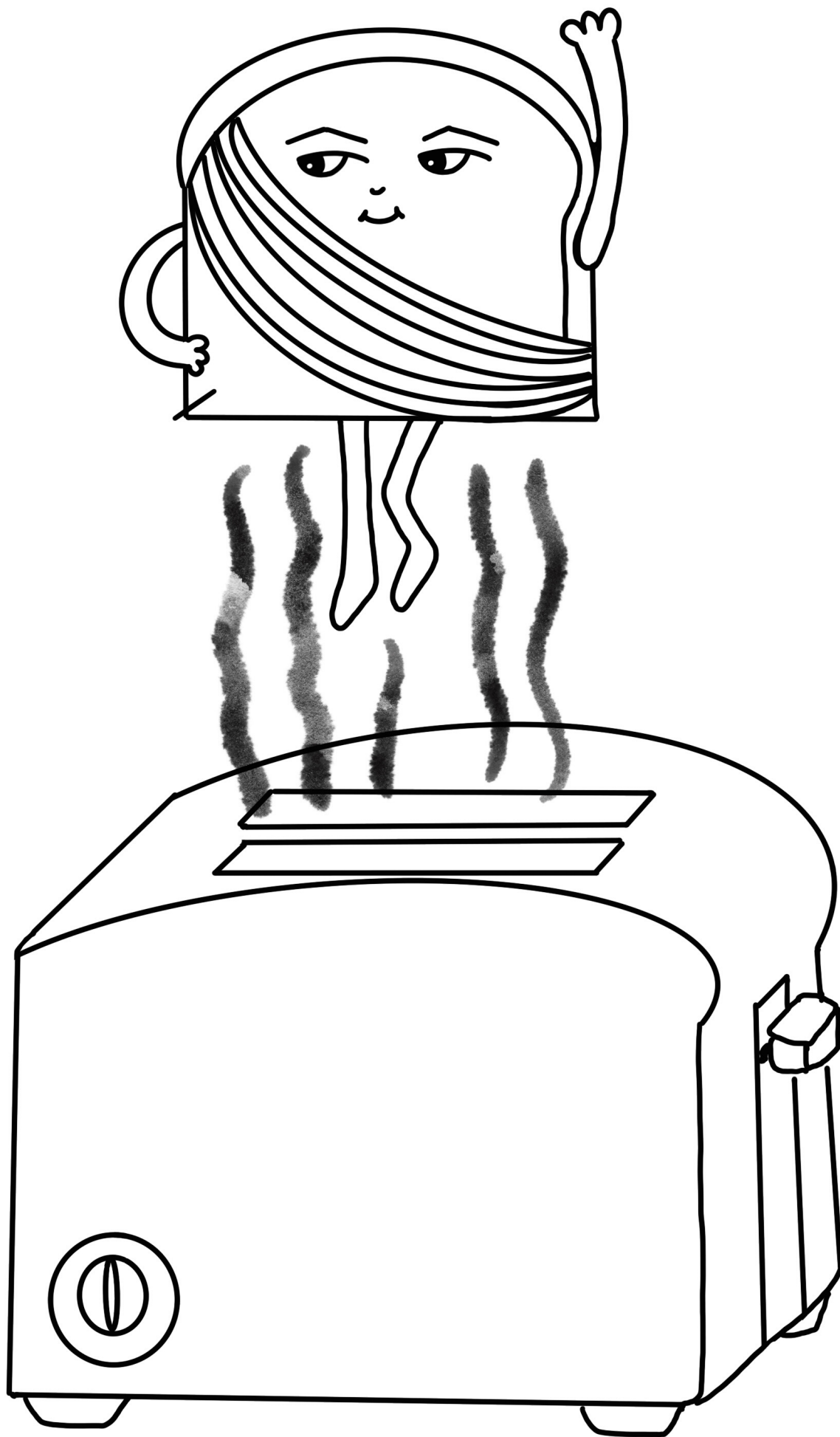
The logo features the words "SHEET FEST" in large, bold, outlined letters. The letters "S", "H", and "E" in "SHEET" have a torn, ragged edge effect. To the right of the word "SHEET" is a silhouette of a palm tree. Below "SHEET" is the word "FEST" in similar outlined letters. Underneath "FEST" is the text "SAN • DIEGO" in a smaller, bold, sans-serif font, with a horizontal line passing through the middle of the letters.

SHEET
FEST
SAN • DIEGO

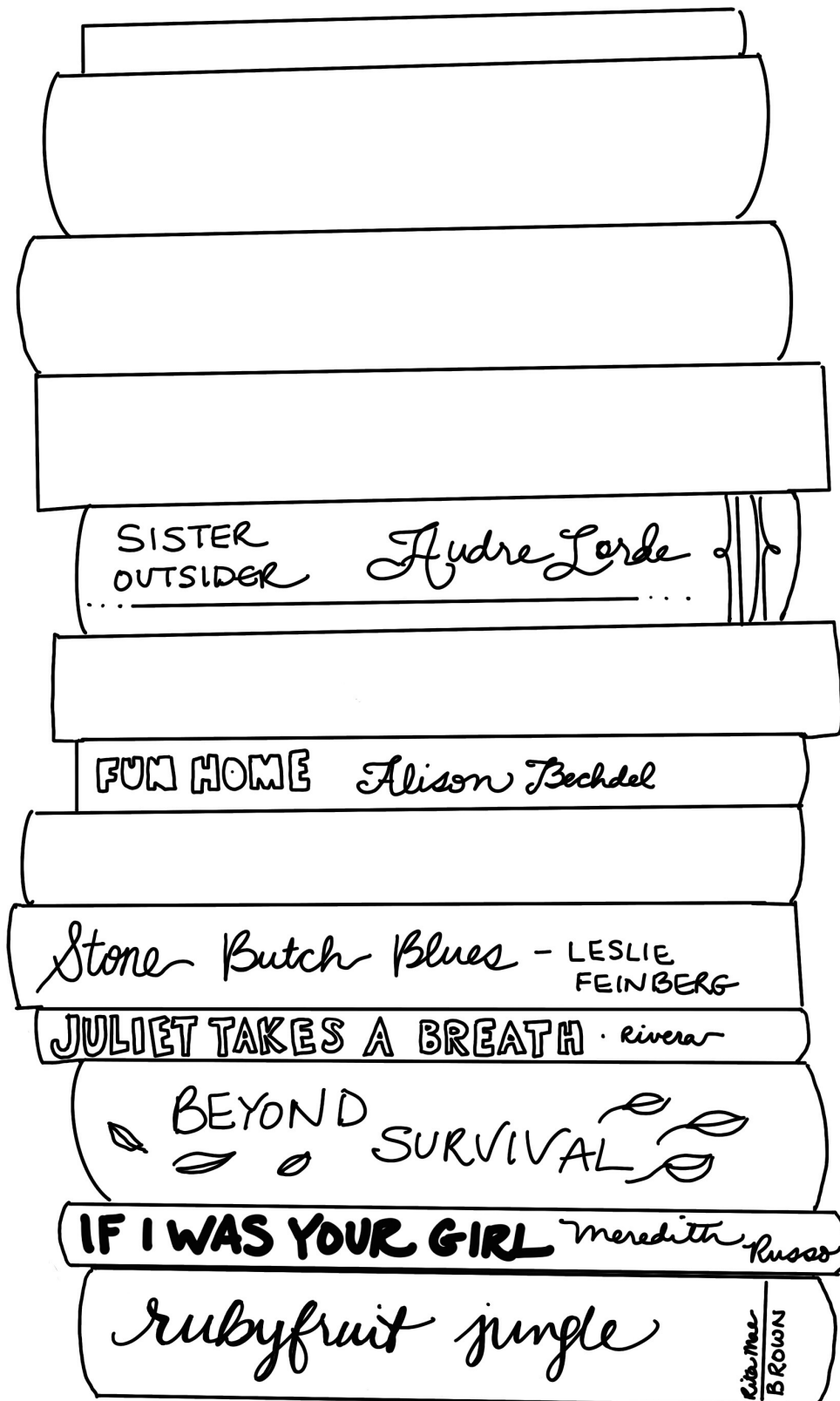
COLORING & ACTIVITY BOOK



THIS COLORING BOOK
WAS CREATED BY
GINI MANN-DEIBERT.
GINI IS AN ARTIST AND
ART TEACHER. YOU
CAN FOLLOW HER
@MANNDEIBERTART

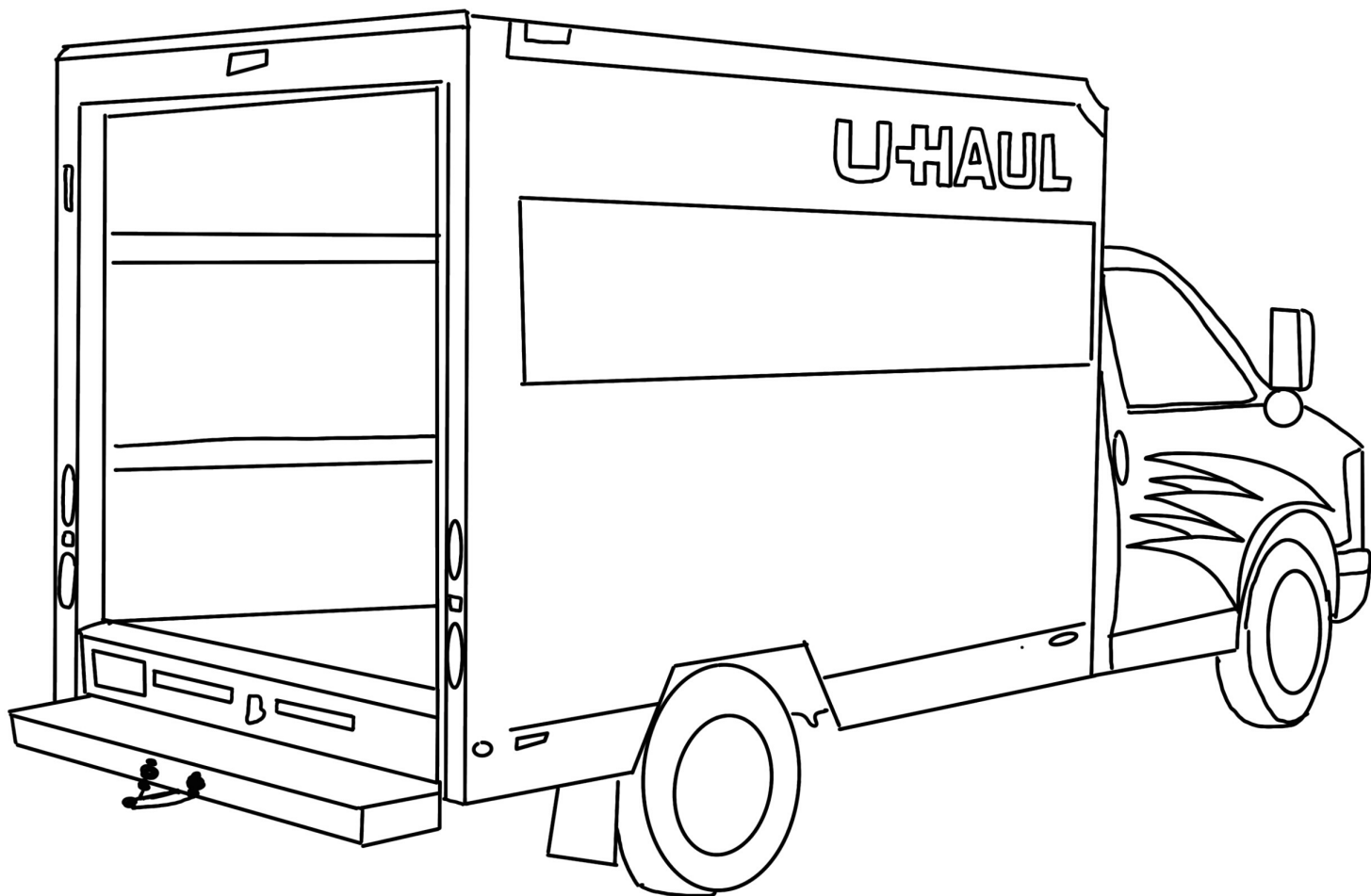


TOASTIE WANTS TO KNOW,
HOW DID YOU COME OUT?

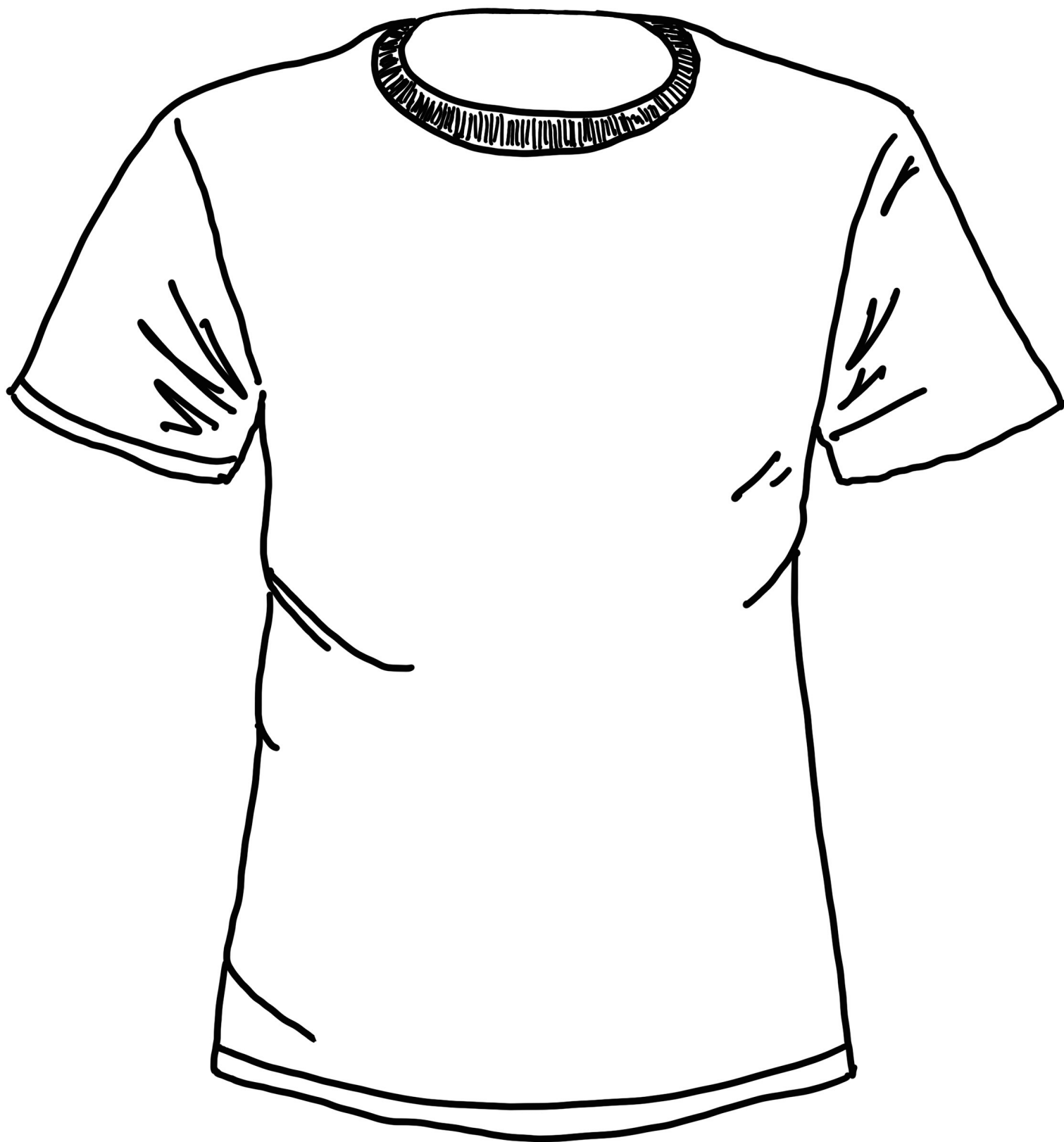


WHAT'S IN YOUR LIBRARY?

PACK IT UP!

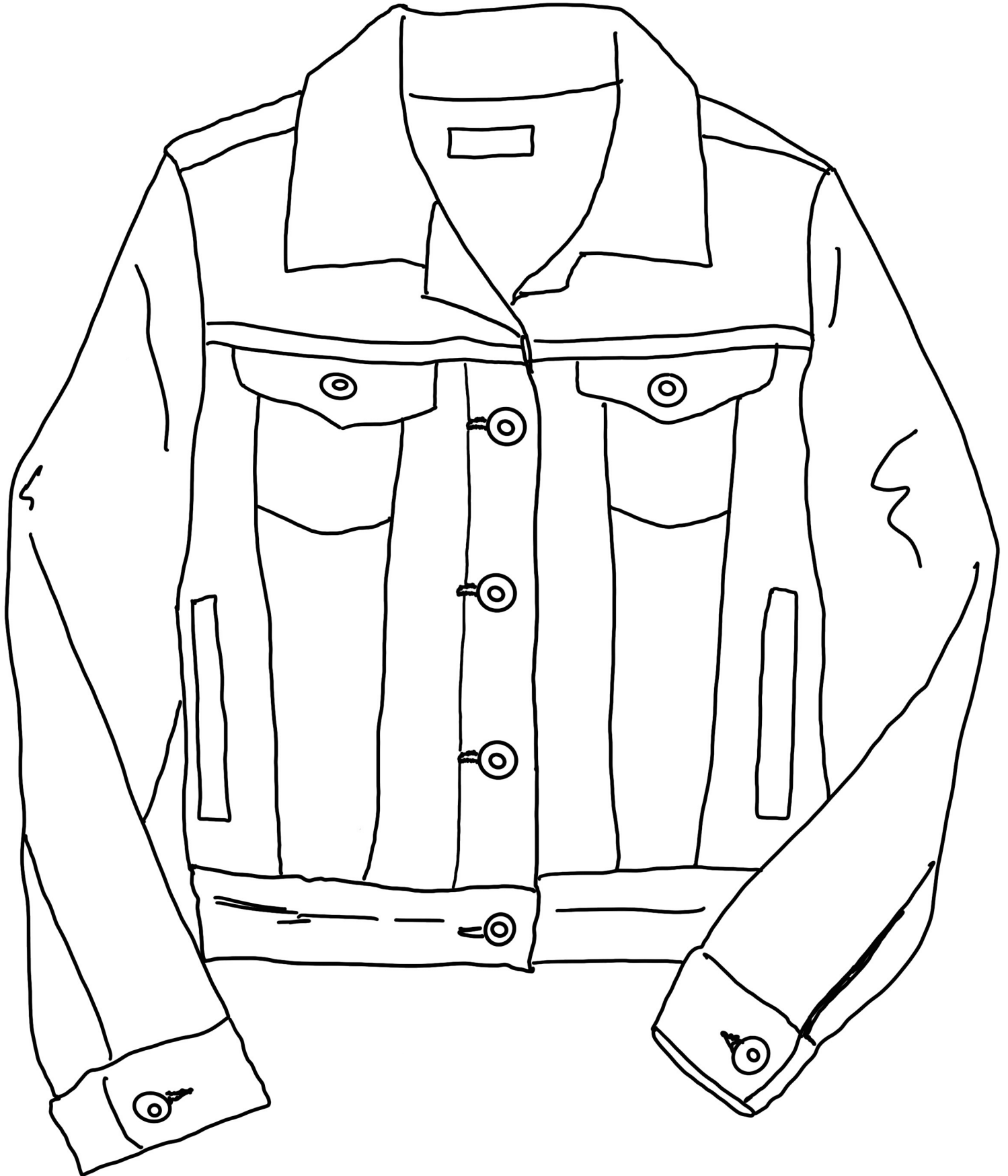


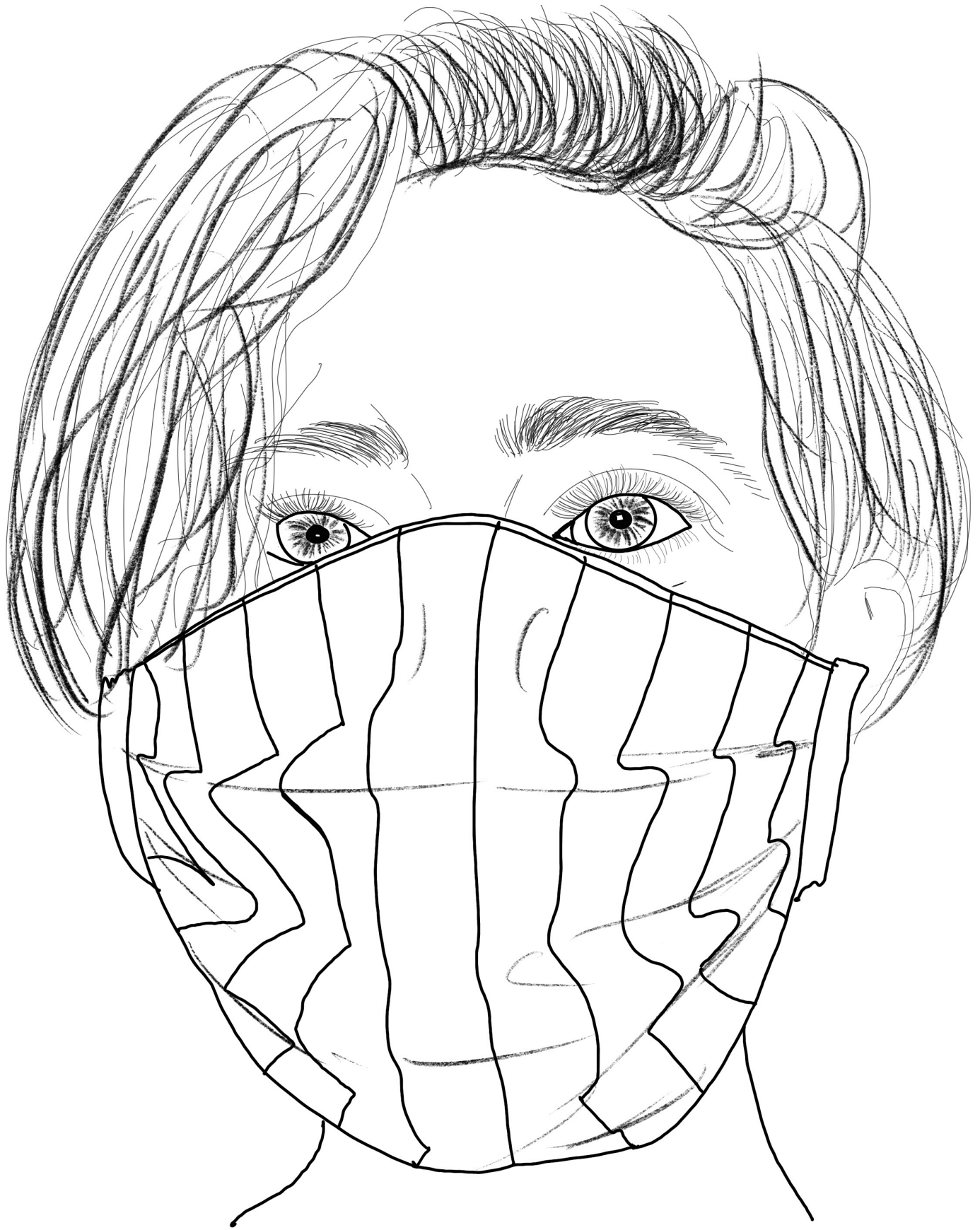




DIY ACTIVITST TSHIRT

ADD PATCHES AND PINS





WEAR YOUR MASK WITH PRIDE!



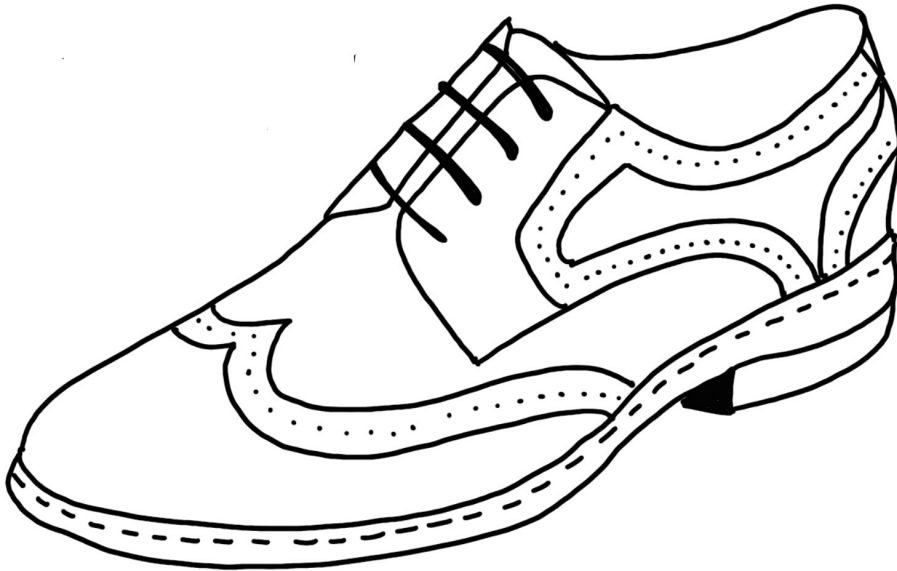
DESIGN YOUR OWN PLAID

SHE FEST'S GUIDE TO SENSIBLE SHOES

SPORTS/WORK



WORK/DRESSY



ALL OCCASIONS



"I'M NO LONGER
ACCEPTING THE
THINGS I
CANNOT
CHANGE...I'M
CHANGING THE
THINGS I
CANNOT
ACCEPT."

-ANGELA DAVIS





"WHAT WOULD HAPPEN IF WE SPOKE THE
TRUTH.?" -ALISON BECHDEL



BADASS AUDRE LORDE



“When we speak we
are afraid our words
will not be heard or
welcomed. But when
we are silent, we are
still afraid. So it is
better to speak.”

-Audre Lorde

STACY
SAKAMOTO
SAYS, "WHEN
YOU GET A
PLANT, ALSO
MAKE SURE
YOU GET A
WATER METER
ASAP.
OVERWATERING
IS REAL AND
DEADLY
LEADING TO
AVOIDABLE
HEARTBREAK."



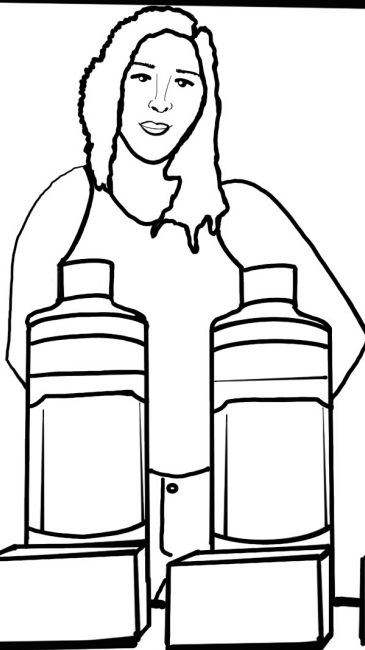
FROSE ALL DAY



FILL MOE'S GLASS



DR. BRONNER'S
ALL-ONE!.



DR. BRONNER'S
ALL-ONE!.

I believe in



&

GENDER-NEUTRAL
bathrooms



"BI PEOPLE ARE AWESOME. WE EXIST, WE ARE VALID, AND WE ARE NOT GREEDY. AND, I DON'T NEED TO EXPLAIN TO YOU WHY I AM BI...JUST TRUST ME." -CALLY

